

Part 1. Hardware Setup.....



Step 1: Connect the power cord to device and wall outlet.



Step 2: Connect the router power plug to an outlet.



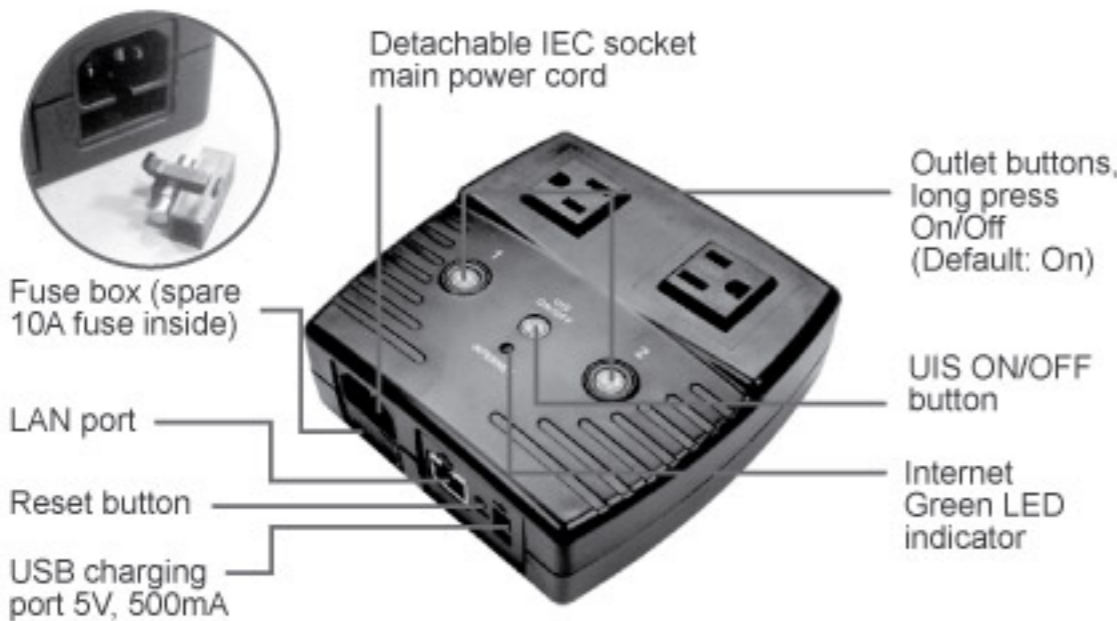
Step 3: Connect LAN cable from Router. The Internet LED will turn ON to indicate online.



Step 4: Press and hold (2 seconds) UIS On/Off button to activate internet protection.

- 1. Press UIS On/Off only when Internet LED is ON.
- 2. All assigned sites must have responded in order for Auto Reset function to work.

Part 2. Description



Green LED indicator	Description
Blinking	At least one IP address has timeout
ON	Internet is online
OFF	No internet connection or, All assigned IP address has timeout

[Reset Button]

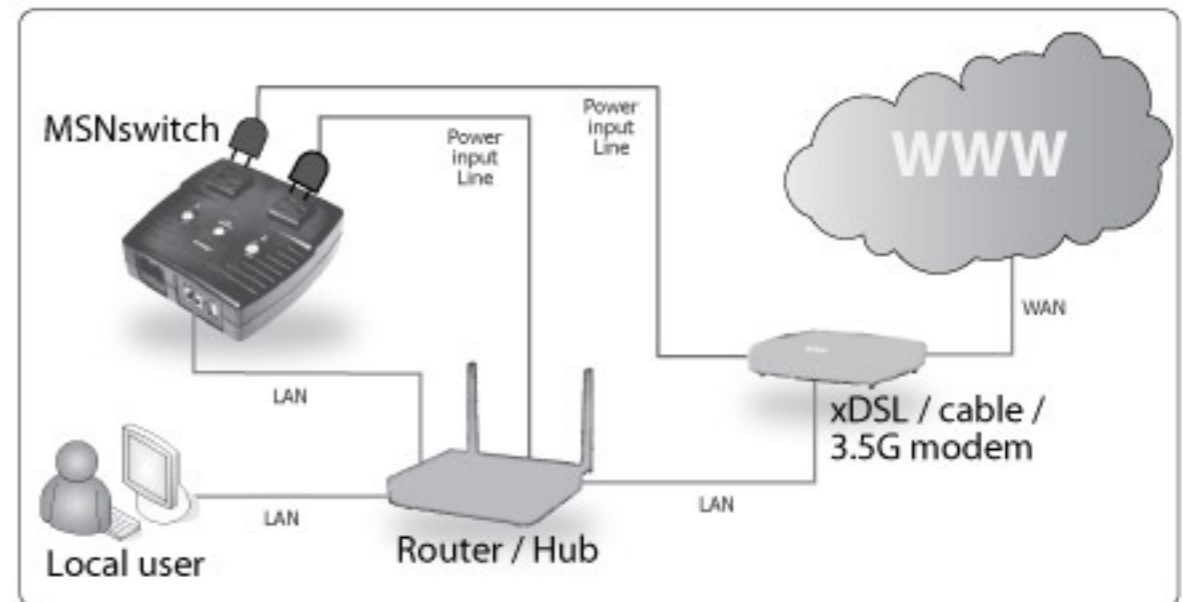
Reset to Factory Default: Press and hold 10 seconds. All three LED lights will blink to indicate factory reset. Release button.

System Reboot: 2x quick presses. Outlet state not affected.

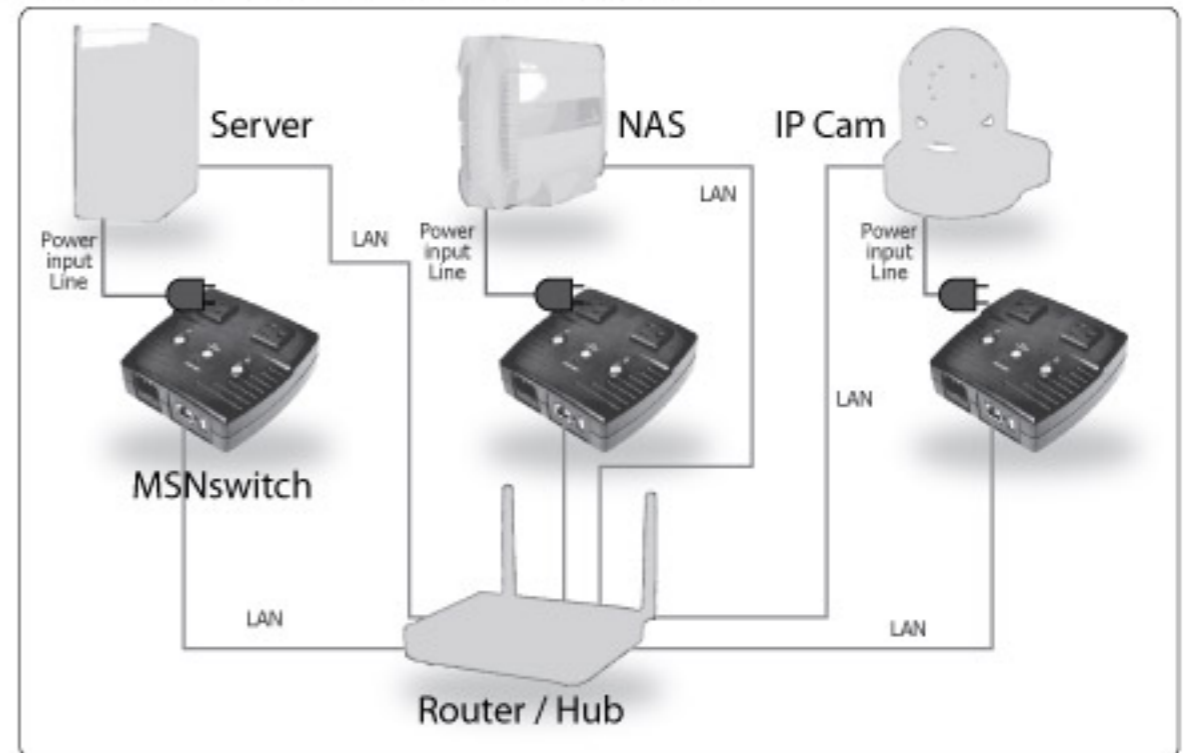
[UIS On/Off Button]

Swap between fixed IP (192.168.0.100) or DHCP mode: Press and hold 10 seconds.

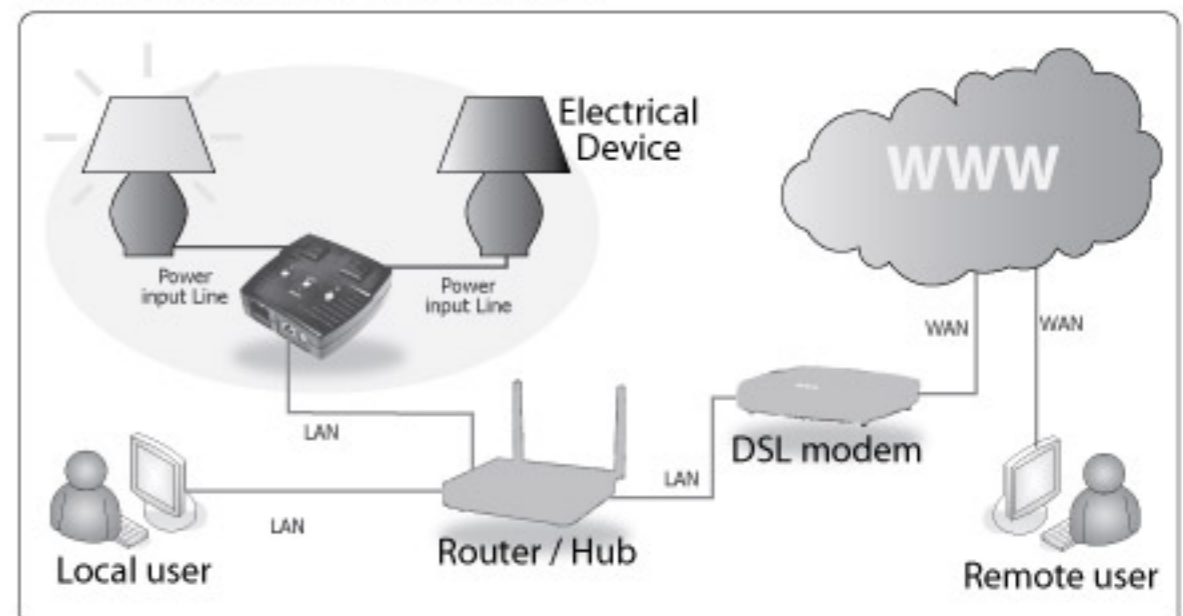
Usage #1: MSNswitch setup to perform automatic reset of router and modem. No software setup required (see Part 1).



Usage #2: MSNswitch setup as watch-dog to keep internet device alive. Software setup required (see Part 3).



Usage #3: MSNswitch setup to remote control electrical devices. Software setup required (see Part 3).

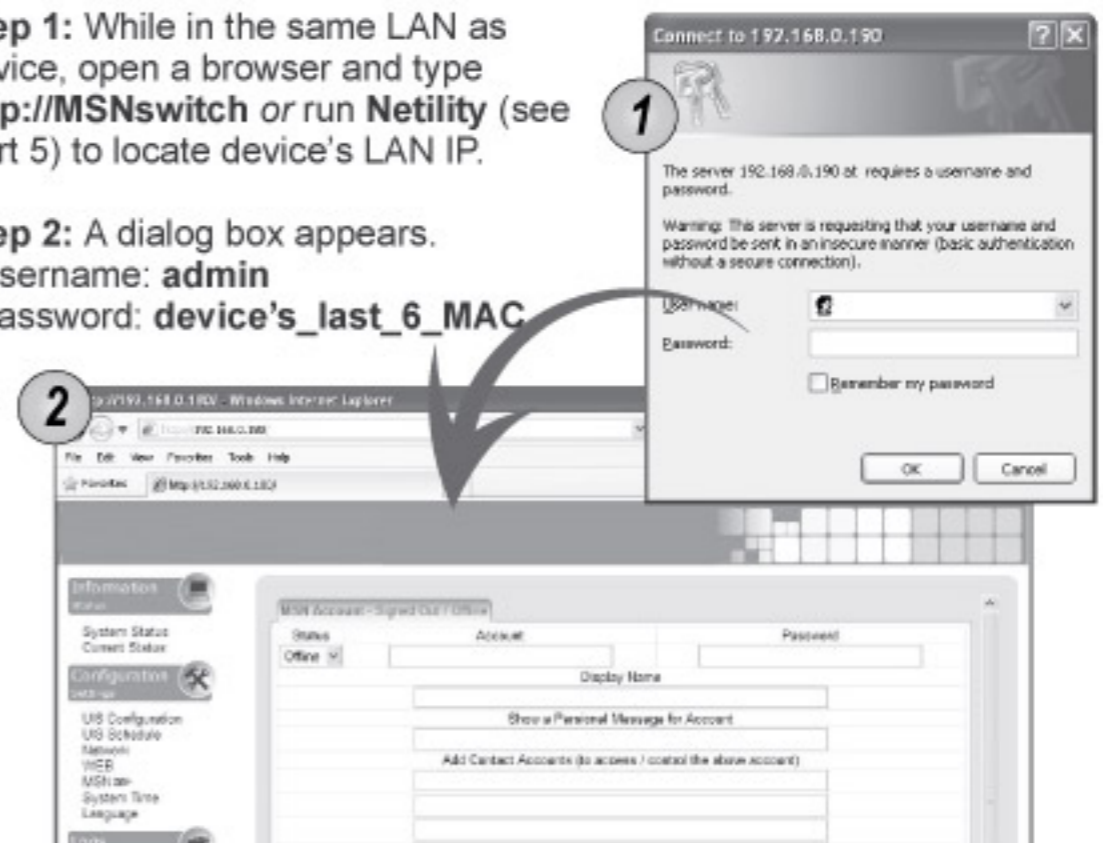


Part 3: Accessing Web User Interface

For advanced user, MSNswitch can be customized for alternate usage and configured for remote access. To access the Web User Interface for customization;

Step 1: While in the same LAN as device, open a browser and type **http://MSNswitch** or run **Netility** (see Part 5) to locate device's LAN IP.

Step 2: A dialog box appears.
Username: **admin**
Password: **device's_last_6_MAC**



1086 rev. 9807

For the latest firmware, please visit <http://www.MSNswitch.com>

Available from: ezDevice APP

Download on the App Store

Available on Google Play

For model: UIS-522b

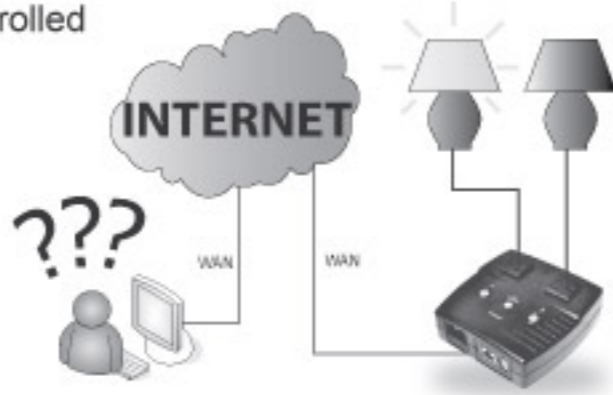
Cloud4UIS.com ENABLED

Quick Installation Guide

Part 4: How to Access Device from WAN.....

MSNswitch can be remotely controlled thru;

- A: Instant Messaging Tool
- B: ezDevice APP or thru www.Cloud4UIS.com
- C: Built-in Web Interface
- D: API (download link in Web Interface > Heartbeat)



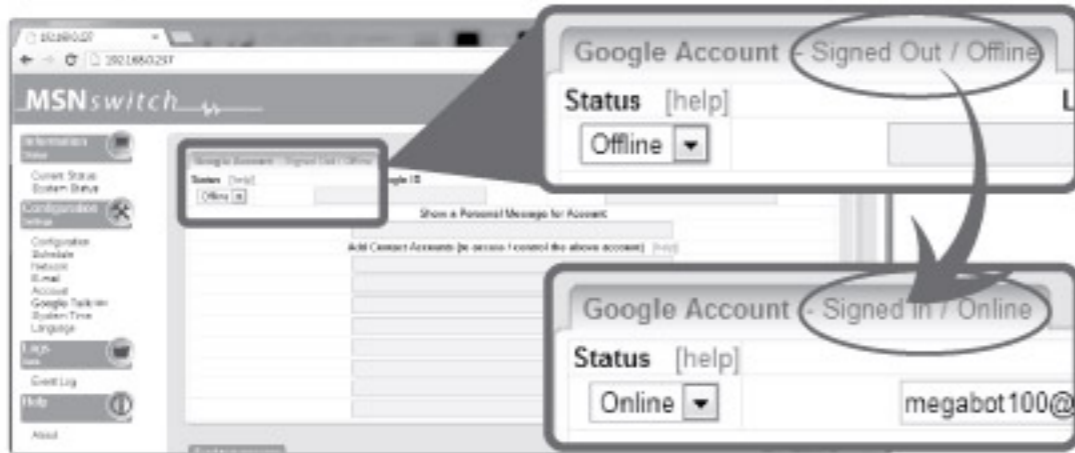
A. Instant Messaging Tool (eg. Google Hangouts / Skype)

Hangouts Setup:

Step 1: Goto www.google.com to create a new Gmail account for MSNswitch.

Step 2: Once registered goto <http://MSNswitch> --> **Configuration** --> **Hangouts**. Select **[Online]** and enter the new Google Login ID and Password.

Next enter your own Gmail in **Add Contact Accounts**. Click **[Apply]**.



Step 3: Once signed in, Google user listed in **Contact Account** will receive a notification to add the device as a friend. Click **[Yes]** to accept.

Skype Setup:

Step 1: Goto <http://MSNswitch> --> **Configuration** --> **Skype**. Select **[Enable]** and follow the "Auto Rebooter" link. Add it to your Skype Contacts.

Step 2: From Skype select "Auto Rebooter" and type "Help"

Step 3: Select **[Get My ID]** to generate a unique ID.

Step 4: Copy and paste ID to **MSNswitch Web UI** --> **Skype** --> **My ID**. Click **[Add]**.

Note: Skype and Hangout are owned by Microsoft and Google respectively. Use of these application are subject to their usage terms and conditions.

B. Using ezDevice APP or www.Cloud4UIS.com

Step 1: Download ezDevice APP & sign up for a Cloud4UIS account.



For smartphone users:
Search for ezDevice APP and install. Run APP and **[Sign up]** for a Cloud4UIS account.

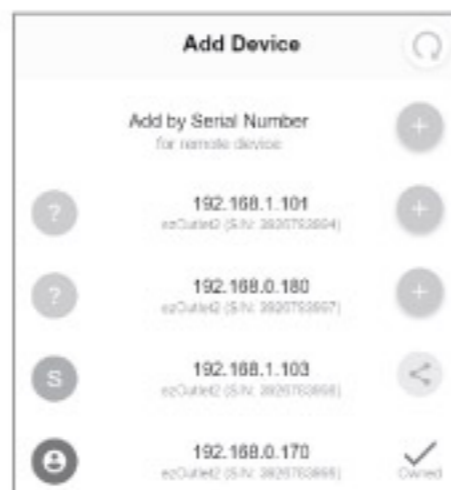
For PC users:
Browse to www.Cloud4UIS.com and **[Sign up]**.

Step 2: Search & Select Device to Add
To locate a device from ezDevice APP or www.Cloud4UIS.com;

a) If APP / PC is on the same router as device, select **[Add Device]**.

b) If APP / PC is not on the same router as device, select **[Add by Serial Number]**.

Next, unplug and replug LAN cable and device will be in 'Add Mode' for 3 minutes. Follow the rest of instructions to complete 'Add Device'.



Step 3: Enter the device KEY and click [Next]

(See label behind device)



Key: 1A2B3C4D



Notes:

- a. Each device can only be 'Added' once.
- b. The 'Adder' becomes the device 'Owner'.
- c. 'Owner' can share device with other Cloud4UIS users and set user's access permission.

How to Remove 'Added' Device

Option 1: From APP or Cloud4UIS:

Select **[Remove Device]**. User removed. Device settings retained.

Option 2: Press & hold device's [Reset Button] for 10 seconds to Reset to Factory Default.

Note:

Reset to Factory Default removes ALL connected users from device.

C. Built-in Web Interface (setup DDNS and Port Forwarding)

Setup to remotely access MSNswitch Web User Interface.

Step 1: Setup Port Forwarding

a) Login to your Router web interface.

b) Forward Port #: **80**. Type / Protocol: **TCP**.

⚠ For details on port forwarding please refer to your router's user manual

Step 2: Get a DDNS account

DDNS service allows a dynamic IP address to be linked to a domain name. See **Configuration** --> **Network** --> **Dynamic DNS** --> **DDNS Providers**.

Select from a supported DDNS service or use MSNswitch free domain name. Default as `<serial_number>.icv99.net`

⚠ To change the free domain name, first goto www.iCV99.net to Activate the account. The product Serial Number and Key is at the bottom of the device.

Serial Number	S/N:3927000000	
	MAC: 00-03-EA-11-99-1Z	
Login / Password to web interface	Login/pwd: admin/admin	Key: 1A2B3C4D — Product Key

Part 5: Locate MSNswitch using Netility.....

Use Netility to:

- a) launch device web UI,
- b) locate or change network settings, and
- c) upgrade firmware.

Step 1: Download Netility and latest firmware from; www.MSNswitch.com

Step 2: Install and run Netility to list LAN IP and/or upgrade firmware.

Note:

- a) Device and Netility must be connected to the same router.
- b) Device's LAN IP can also be obtained from router's DHCP table.

